

NOTES :

1. SEE CABLE SUMMARY, ML ITEM 0463, FOR APPLICABLE CABLES AND DEFINITION.
2. ALL CONNECTIONS TO TURBINE BASE AND TO GENERAL ELECTRIC COMPANY FURNISHED DEVICES, MUST CONFORM TO ALL APPLICABLE LOCAL AND NATIONAL ELECTRIC CODES.
3. SEE MECHANICAL OUTLINE, ML ITEM 0306, FOR COMPARTMENT OUTLINE DIMENSIONS AND ORIENTATIONS.
4. ALL DIMENSIONS ARE NOMINAL. ALL DIMENSIONS ARE IN FEET AND INCHES, UNLESS OTHERWISE SPECIFIED. () ARE IN MM.
5. FOR HARDWIRED CABLES, IT IS INSTALLERS RESPONSIBILITY TO SUPPLY CORD GRIPS AND TERMINALS WHERE NEEDED.
6. TABULATED DEVICE OPENINGS ARE ACTUAL OPENINGS. REDUCERS AND ENLARGERS MAY BE USED BY PURCHASER AS REQUIRED.
7. GE SUPPLIED CABLES ARE SUPPLIED ON ML ITEM A061. SEE CABLE SUMMARY ML 0463 FOR DEFINITION.
8. ROUTING FROM CUSTOMER'S CONTROL / POWER EQUIP NOT INCLUDED.
9. SEE FOUNDATION INTERFACE OUTLINE, ML ITEM 0323, FOR SUGGESTED CONDUIT EMBEDMENTS AND ROUTING.

DWS NO		196D4463		SH	1	REV	—	1	
REVISIONS									
REV	DESCRIPTION						DATE	APPROVED	

REVISE ON CAD ONLY
UG PART: GR0730-0301-P0001
(SPEC: 196D4463SH1)


88BT-1	1	OUTLINE, VENT FAN-ENCLOSURE	111E8048P004
DEVICE	IT.	NOMENCLATURE	IDENT
LIST OF COMPLEMENTARY DOCUMENTS			

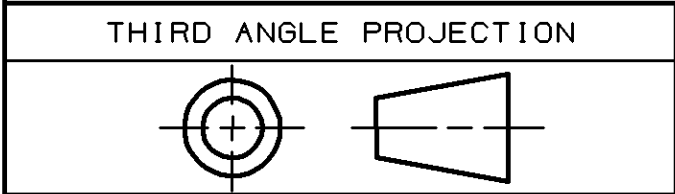
—	—	—	—	—	—	—	—	—	—	—	—	—	—	—	REV	REV STATUS OF SHEETS
15	14	13	12	11	10	9	8	7	6	5	4	3	2	1	SH	

DRAWING INFORMATION LOCATION

SEE NOTES ABOVE

DOWNSTREAM ➡

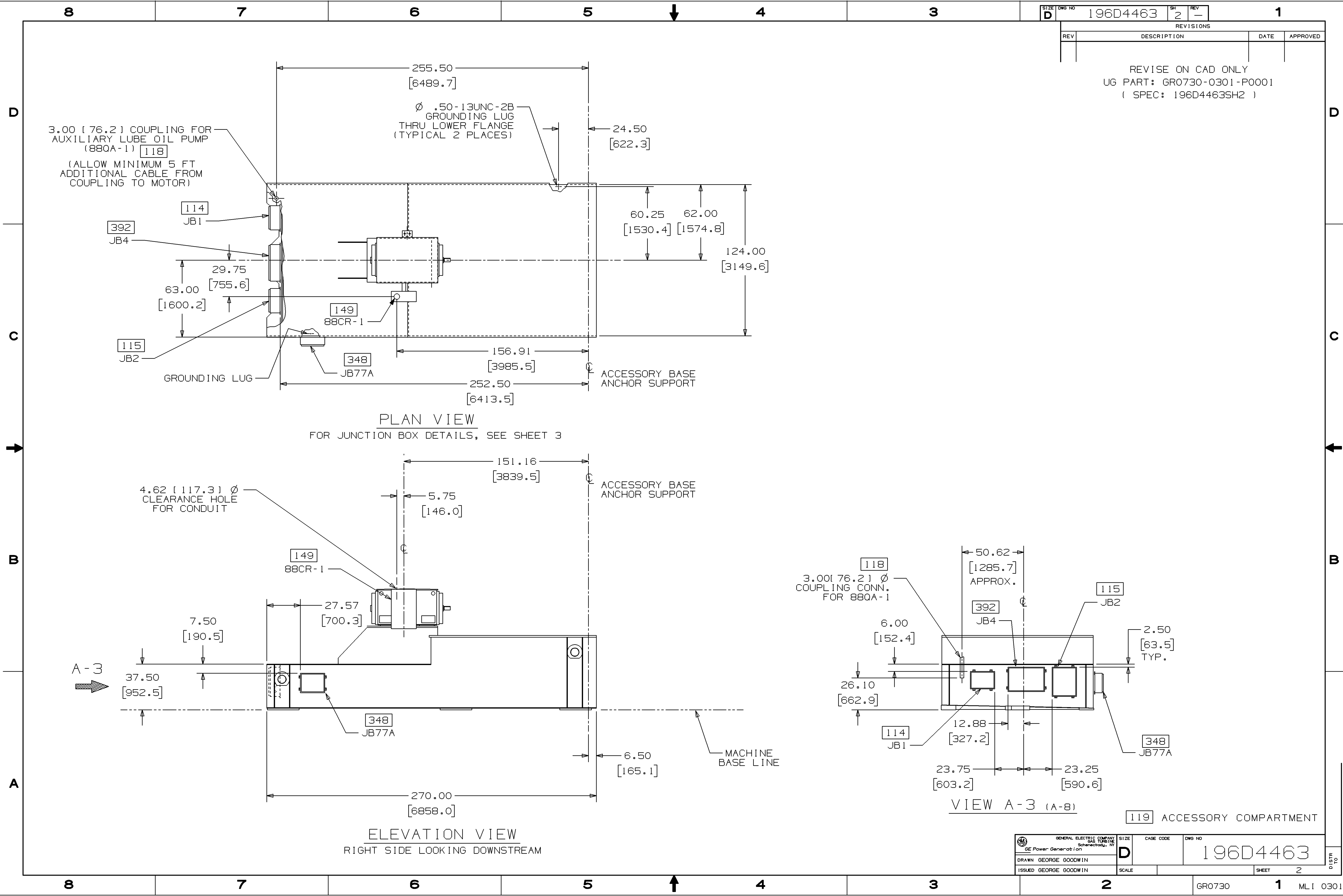
UNLESS OTHERWISE SPECIFIED	SIGNATURES		DATE		 GE Power Generation		GENERAL ELECTRIC COMPANY GAS TURBINE Schenectady, NY	
DIMENSIONS ARE IN INCHES TOLERANCES ON: 2 PL DECIMALS ± 3 PL DECIMALS ± ANGLES ± FRACTIONS ± <div>✓</div>	DRAWN GEORGE GOODWIN		01-02-14		OTLN GT PKG CONN ELEC			
	CHECKED GEORGE GOODWIN		01-08-07					
	ENGRG PRADEEP SENAPATI		01-08-07					
	ISSUED GEORGE GOODWIN		01-08-07					
APPLIED PRACTICES 348A9200					FIRST MADE FOR ML-7A1PEA234 IT4 0301			
					SIZE CASE CODE		DWG NO	
					D		196D4463	
	SIM TO:				SCALE		SHEET 1	

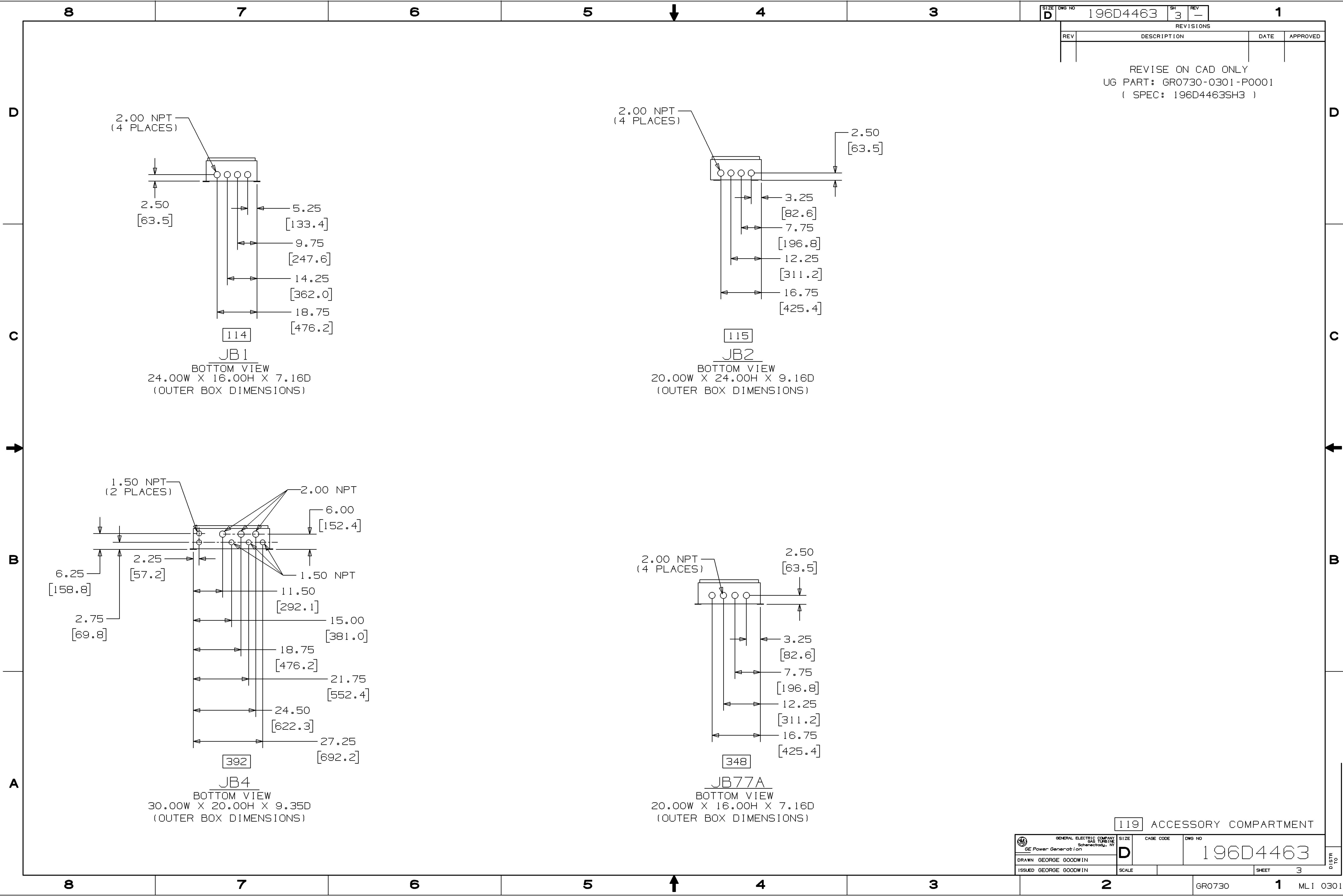


DT-1N

GR0730

CE1D

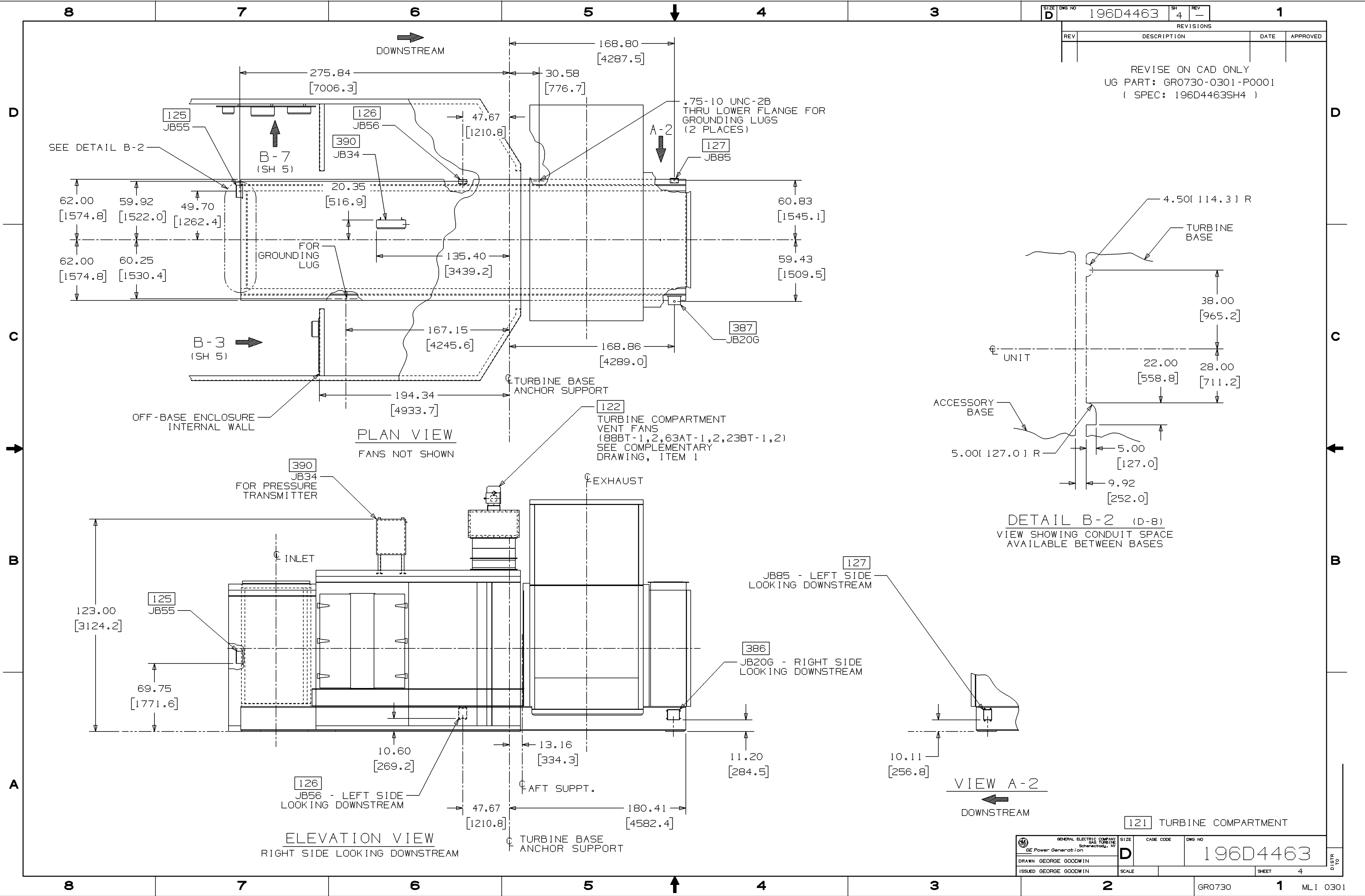


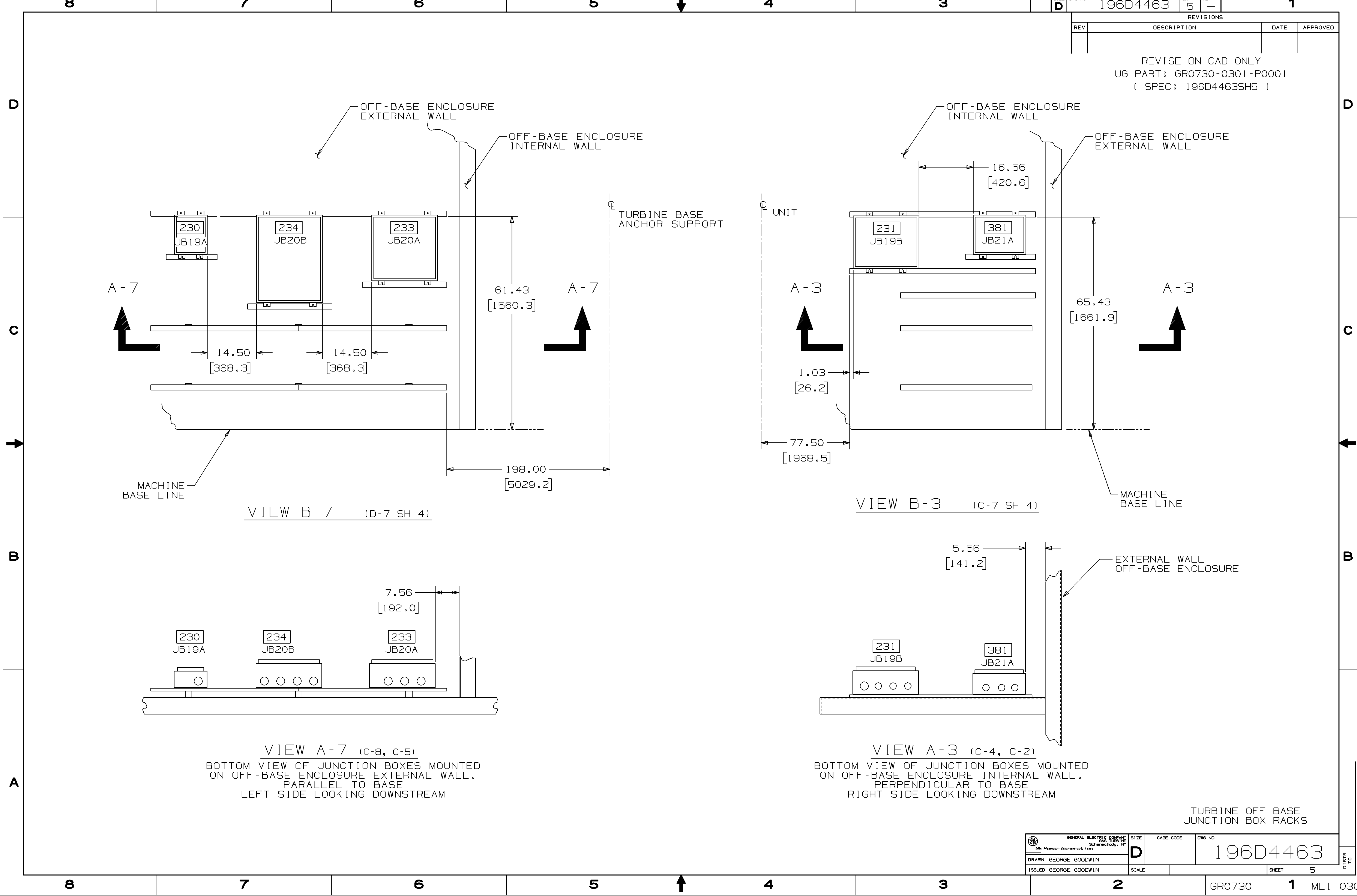


REVISIONS			
REV	DESCRIPTION	DATE	APPROVED

REVISE ON CAD ONLY
UG PART: GR0730-0301-P0001
(SPEC: 196D4463SH3)

119 ACCESSORY COMPARTMENT		SIZE	CAGE CODE	DWG NO
196D4463		D		
DRAWN GEORGE GOODWIN		SCALE		SHEET 3
ISSUED GEORGE GOODWIN				DISTR TO



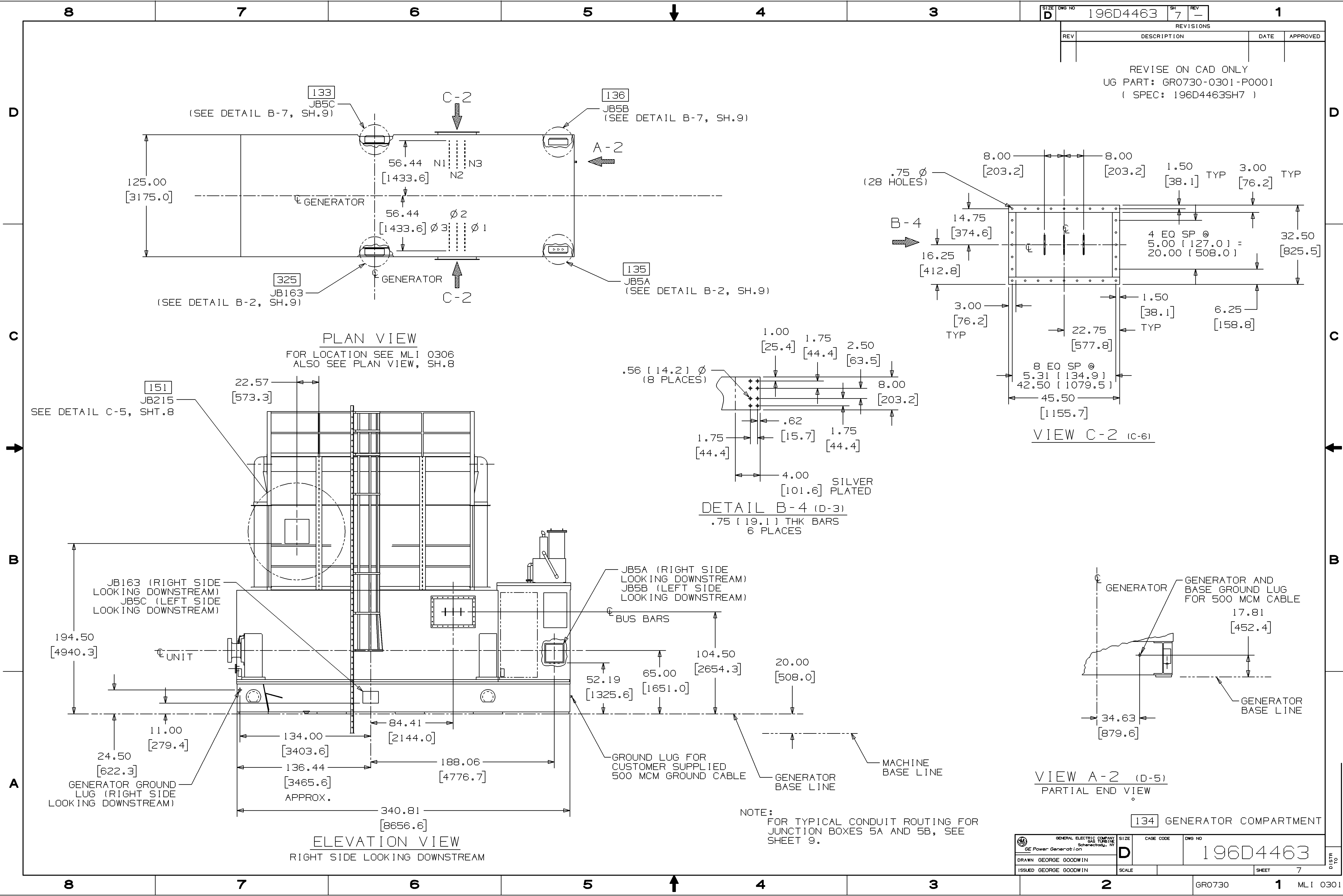


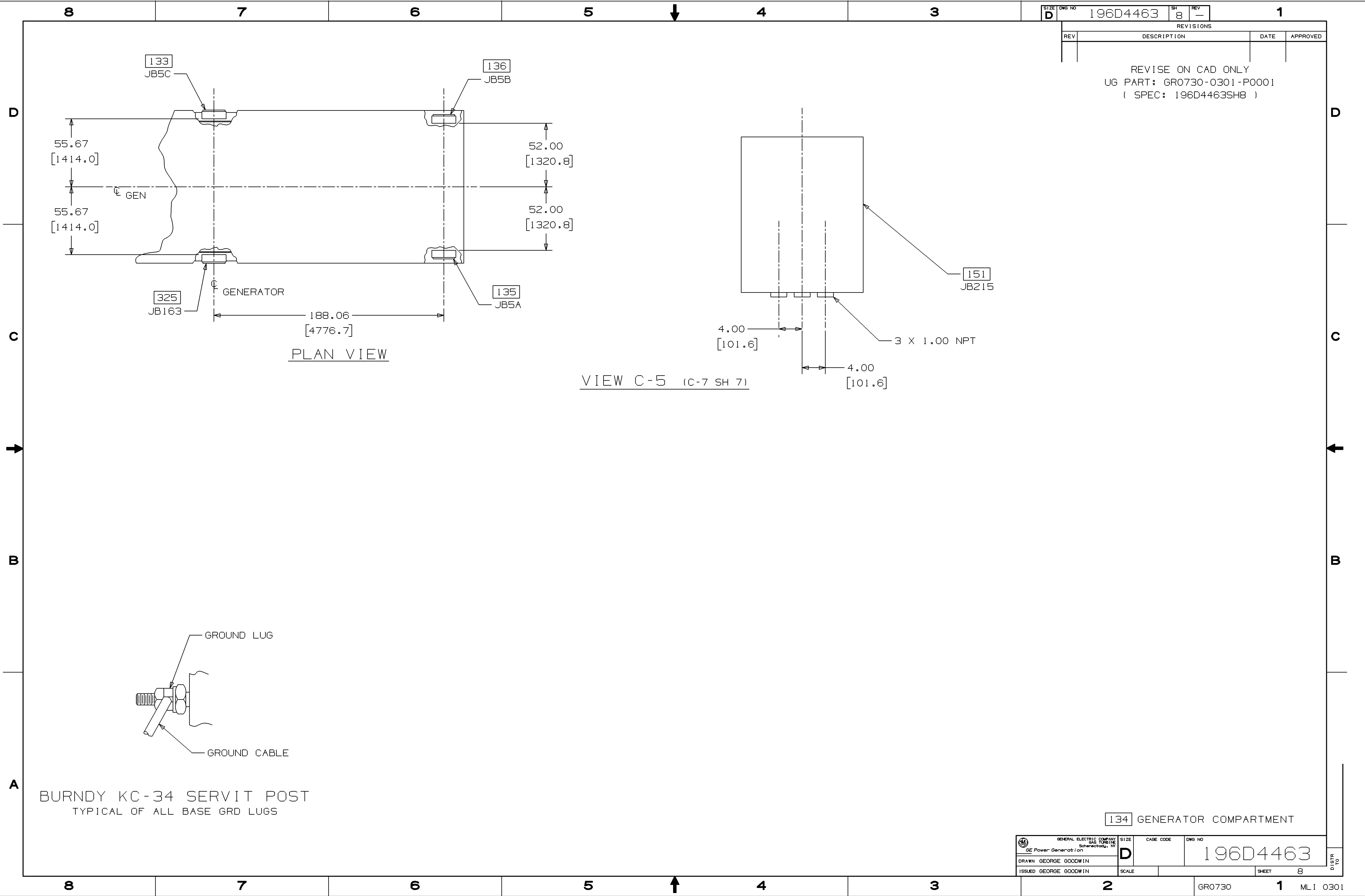
REV	REVISIONS		DATE	APPROVED
	DESCRIPTION			

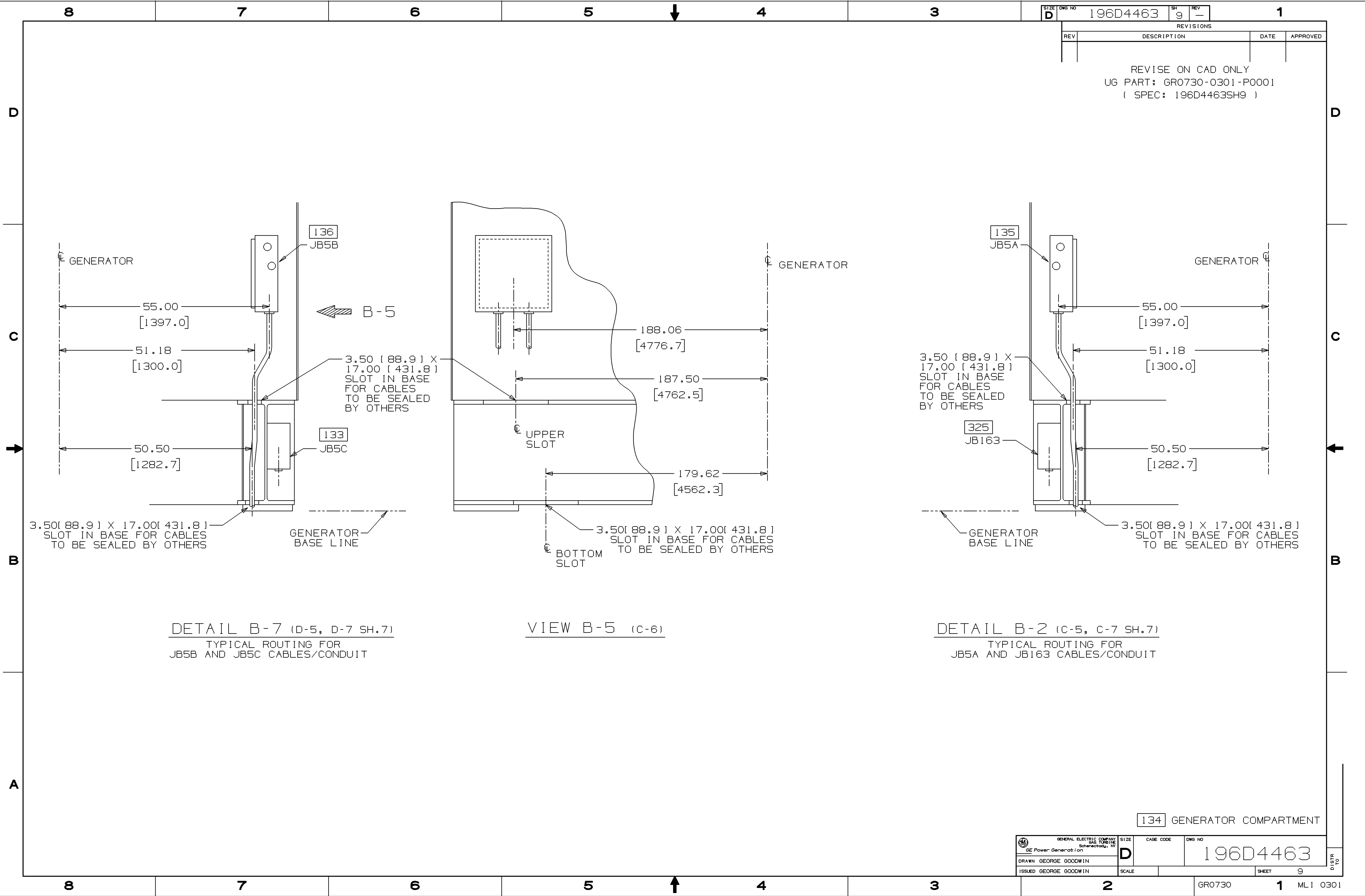
REVISE ON CAD ONLY
UG PART: GR0730-0301-P0001
(SPEC: 196D4463SH5)

GENERAL ELECTRIC COMPANY Gas Turbine Schenectady, NY		SIZE	CAGE CODE	DWG NO
GE Power Generation		D		196D4463
DRAWN GEORGE GOODWIN		SCALE		SHEET 5
ISSUED GEORGE GOODWIN				DISTR TO

TURBINE OFF BASE
JUNCTION BOX RACKS







8

7

6

5

↓

4

3

D

196D4463

SH

REV

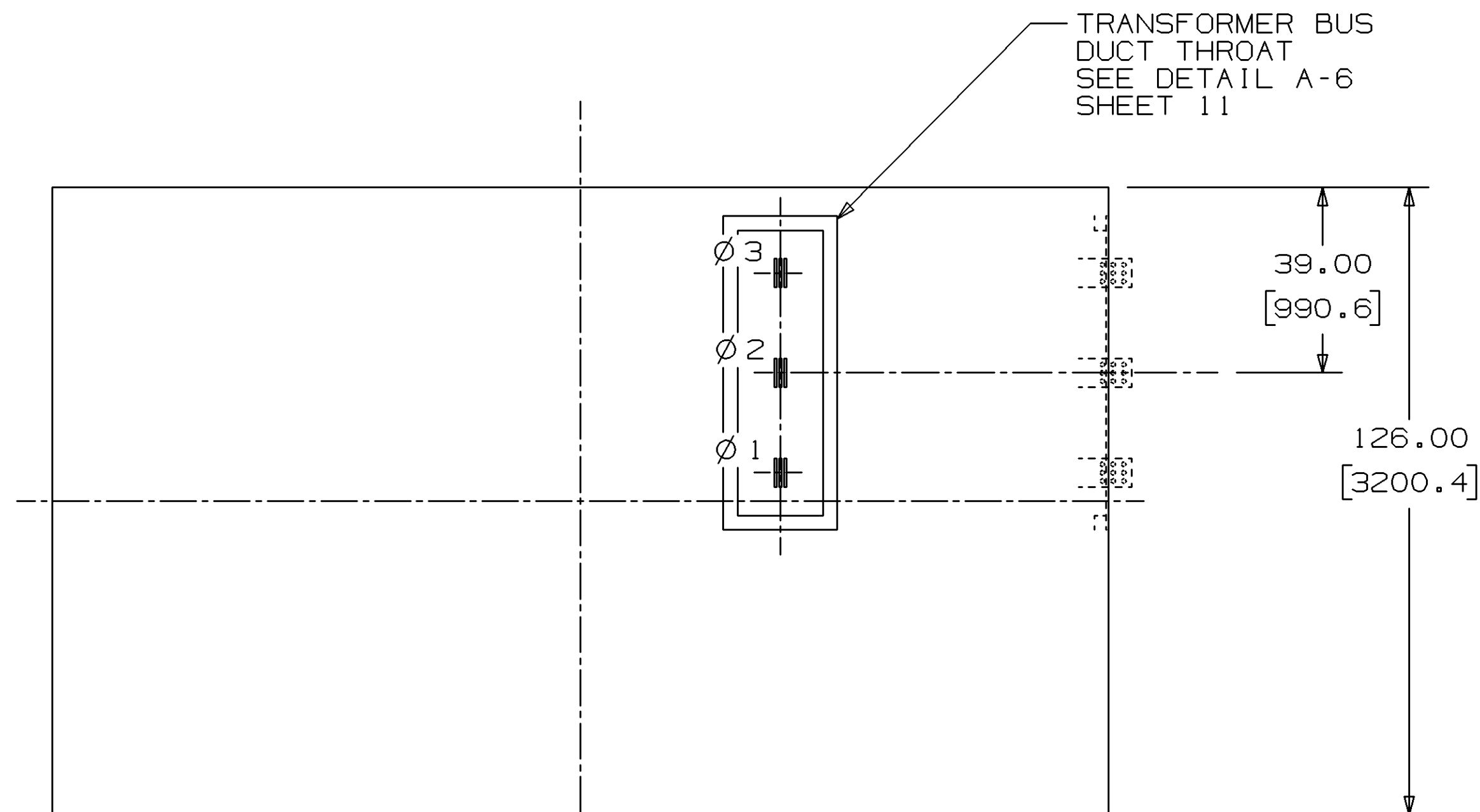
10

1

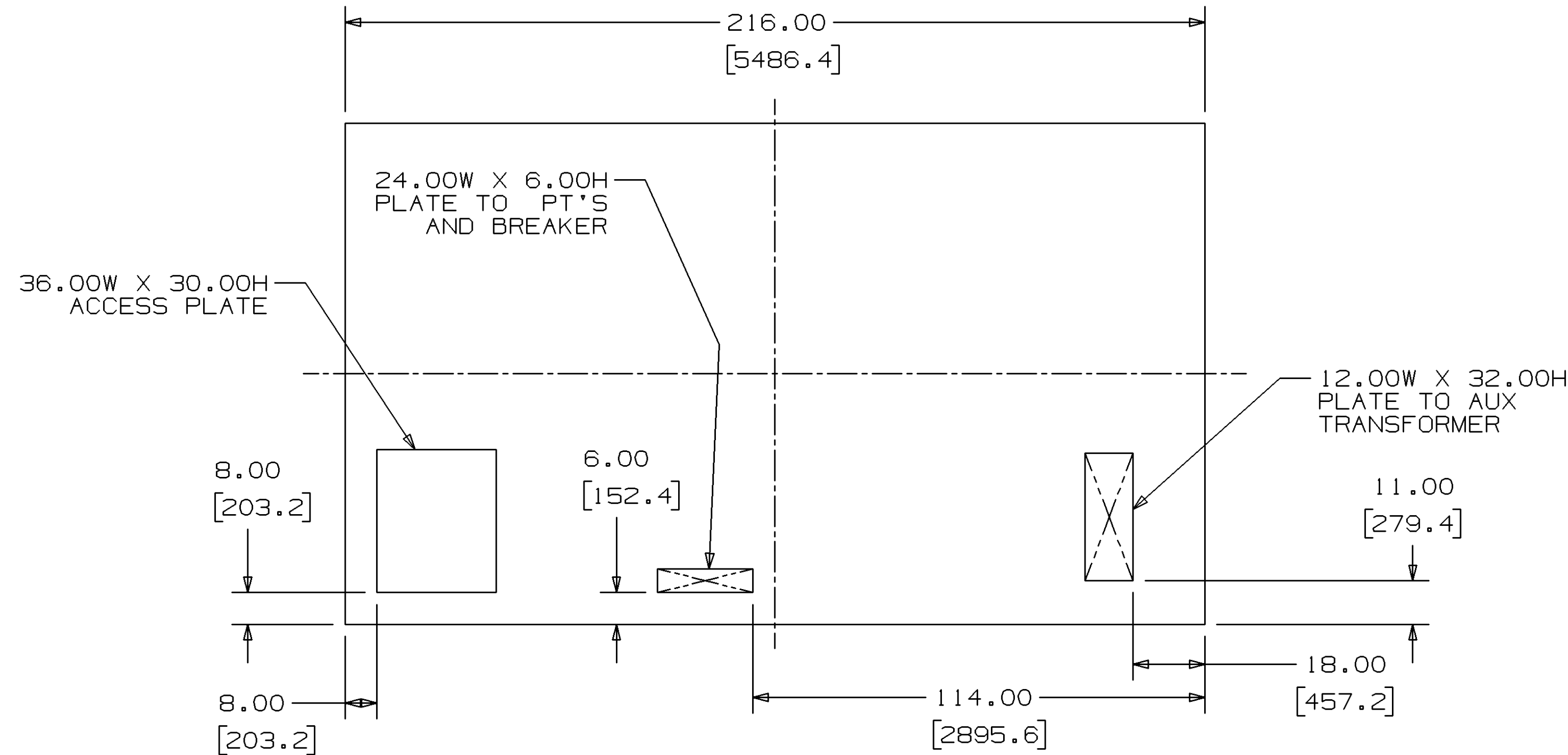
NOTES:

1. PIT REQUIRED UNDERNEATH THE COMPARTMENT TO ALLOW INSTALLER TO MAKE PLUG-IN ELECTRICAL CONNECTIONS TO EQUIP. (SEE MLI 0323 FOR PIT REQUIREMENTS). IF NO PIT, HARDWIRING IS REQUIRED.
2. BUS JOINTS AND CONNECTIONS TO BE TAPED AT INSTALLATION BY CUSTOMER.
3. TOTAL WEIGHT OF BUS DUCT WHICH CAN BE SUPPORTED IS 700 LBS (317KG).
4. TERMINAL BOARDS FOR BUS DUCT HEATER PIG-TAIL, LOCATION IN SWGR, NEAR BUS DUCT FLANGE.
5. PURCHASER TO DRILL CONDUIT PLATES AS REQUIRED.

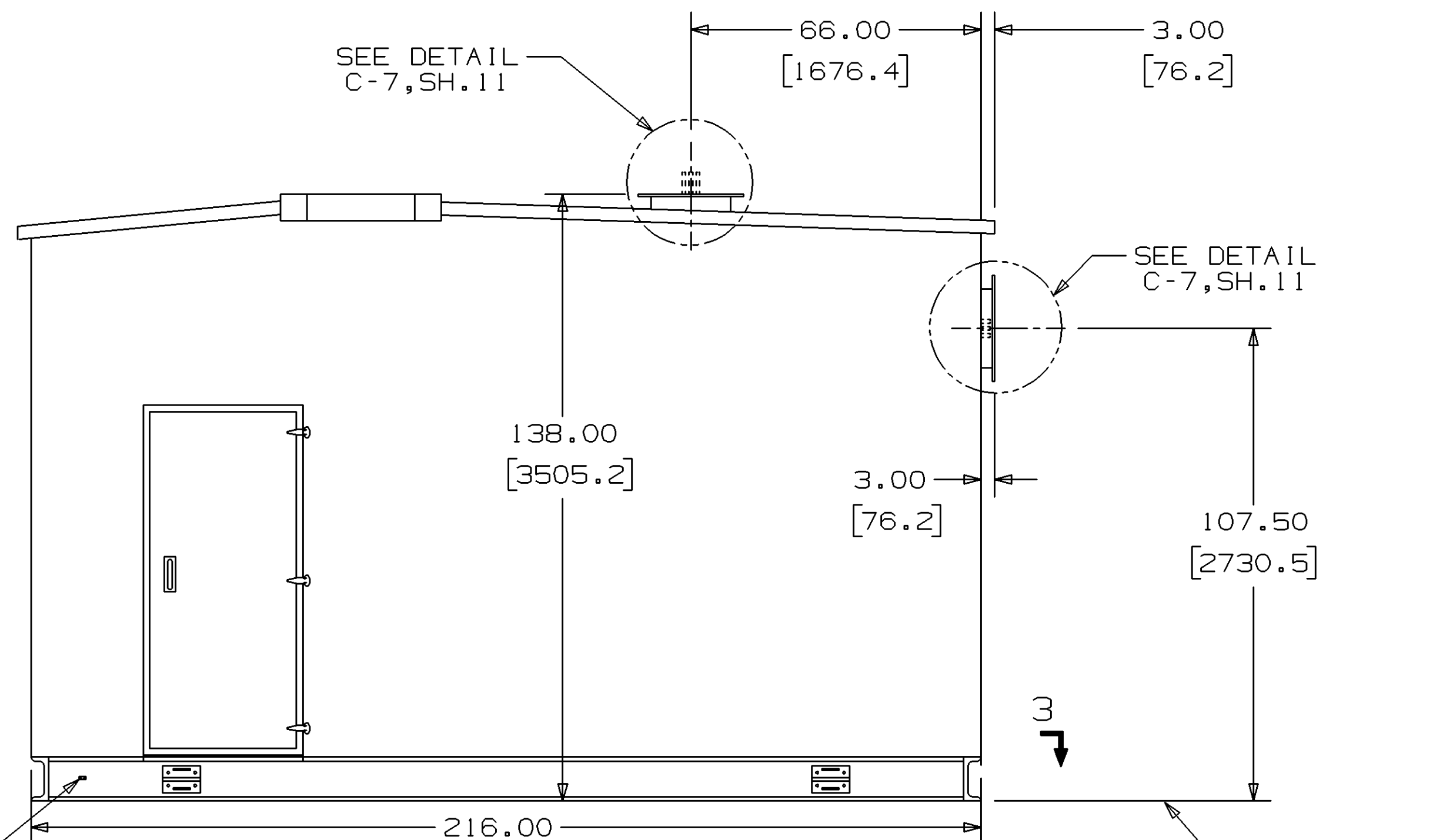
REVISE ON CAD ONLY
UG PART: GR0730-0301-P0001
(SPEC: 196D4463SH10)



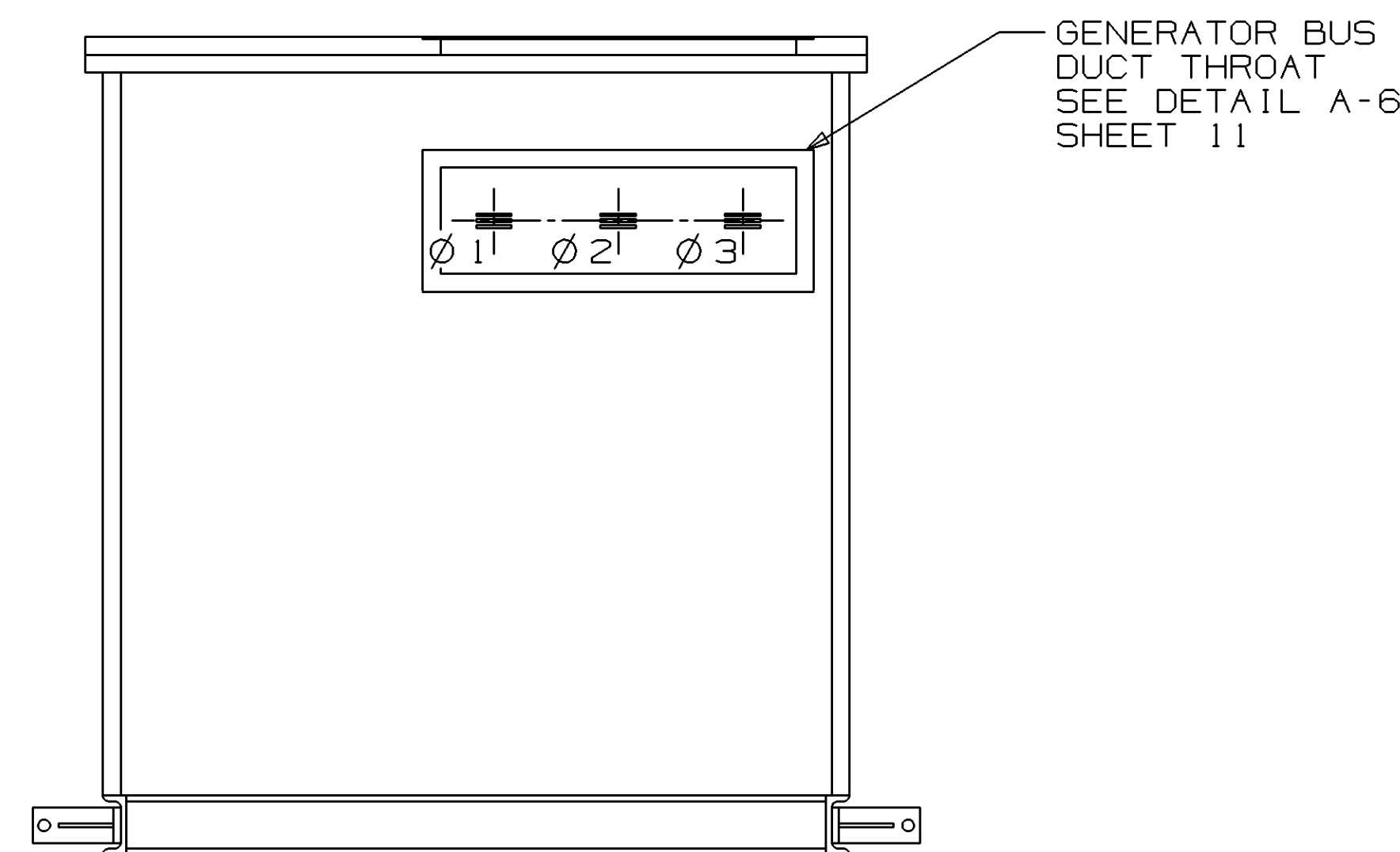
PLAN VIEW



VIEW C-3



ELEVATION VIEW



VIEW A-4

NEMA 2-HOLE
GROUND PAD
(2 PLACES
DIAGONALLY
OPPOSITE)

GENERAL ELECTRIC COMPANY
GE Power Generation
DRAWN GEORGE GOODWIN
ISSUED GEORGE GOODWIN

SIZE
D

CAGE CODE

DWG NO

196D4463

SCALE

SHEET

10

GR0730

1

MLI 0301

8

7

6

5

↑

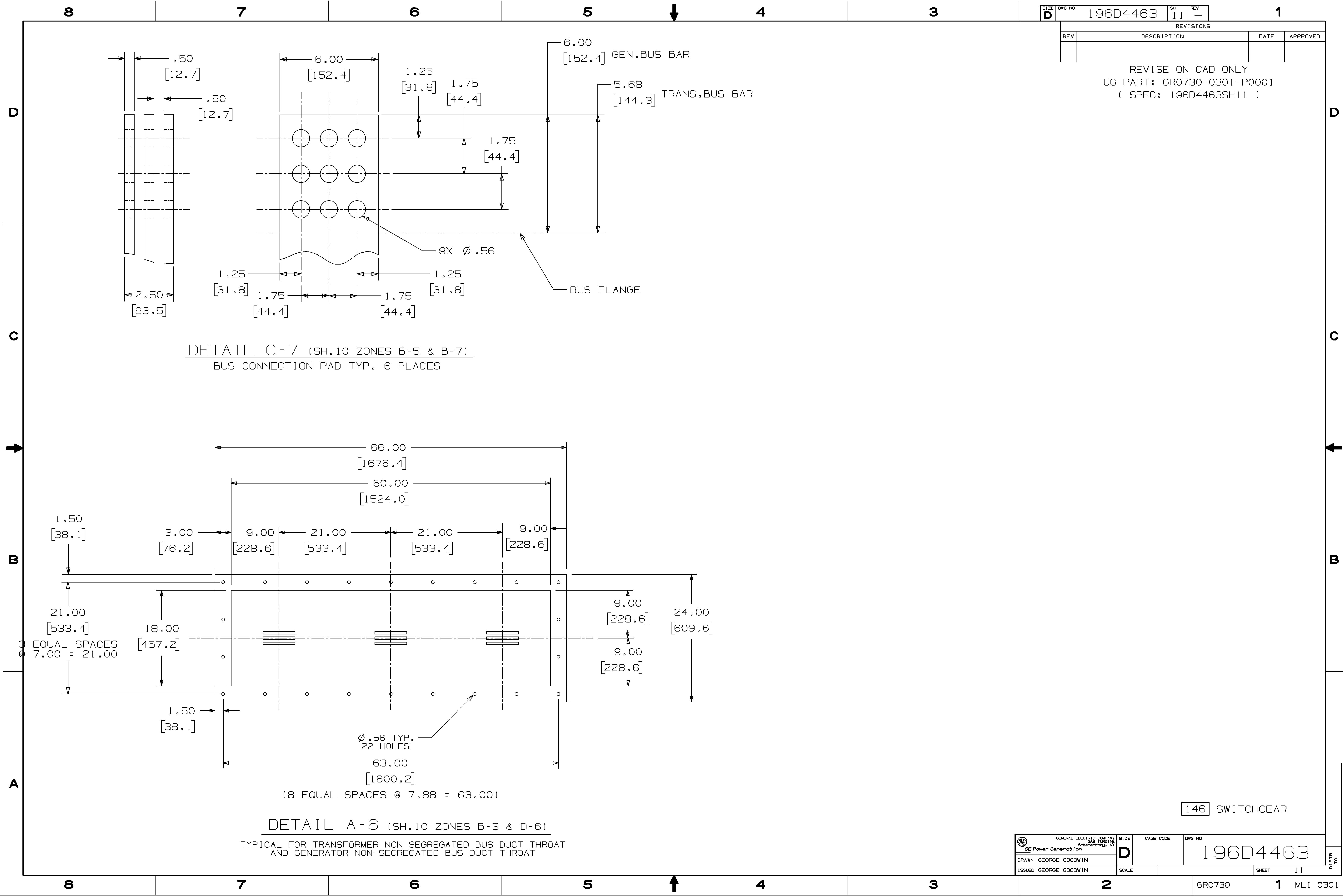
4

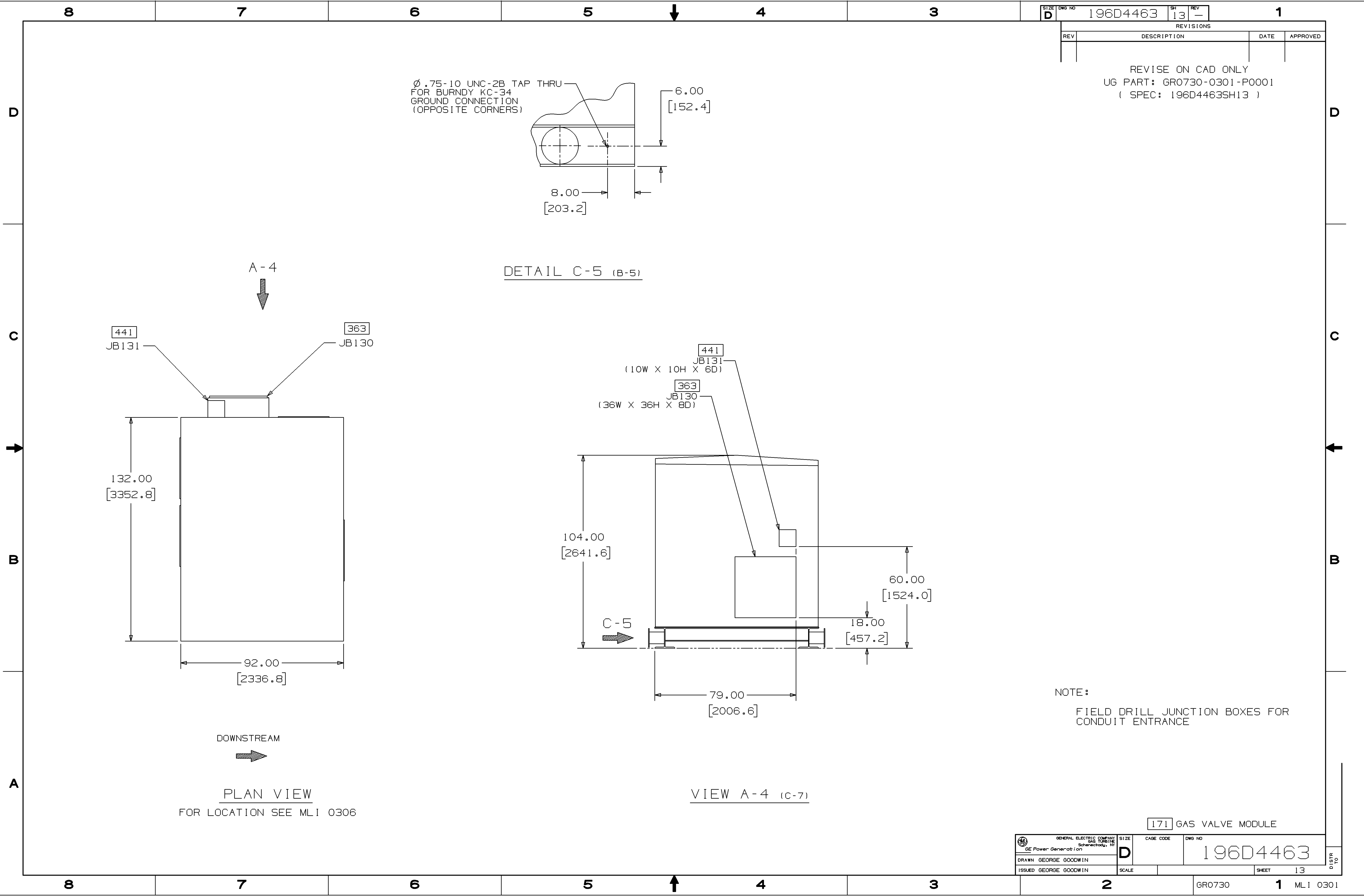
3

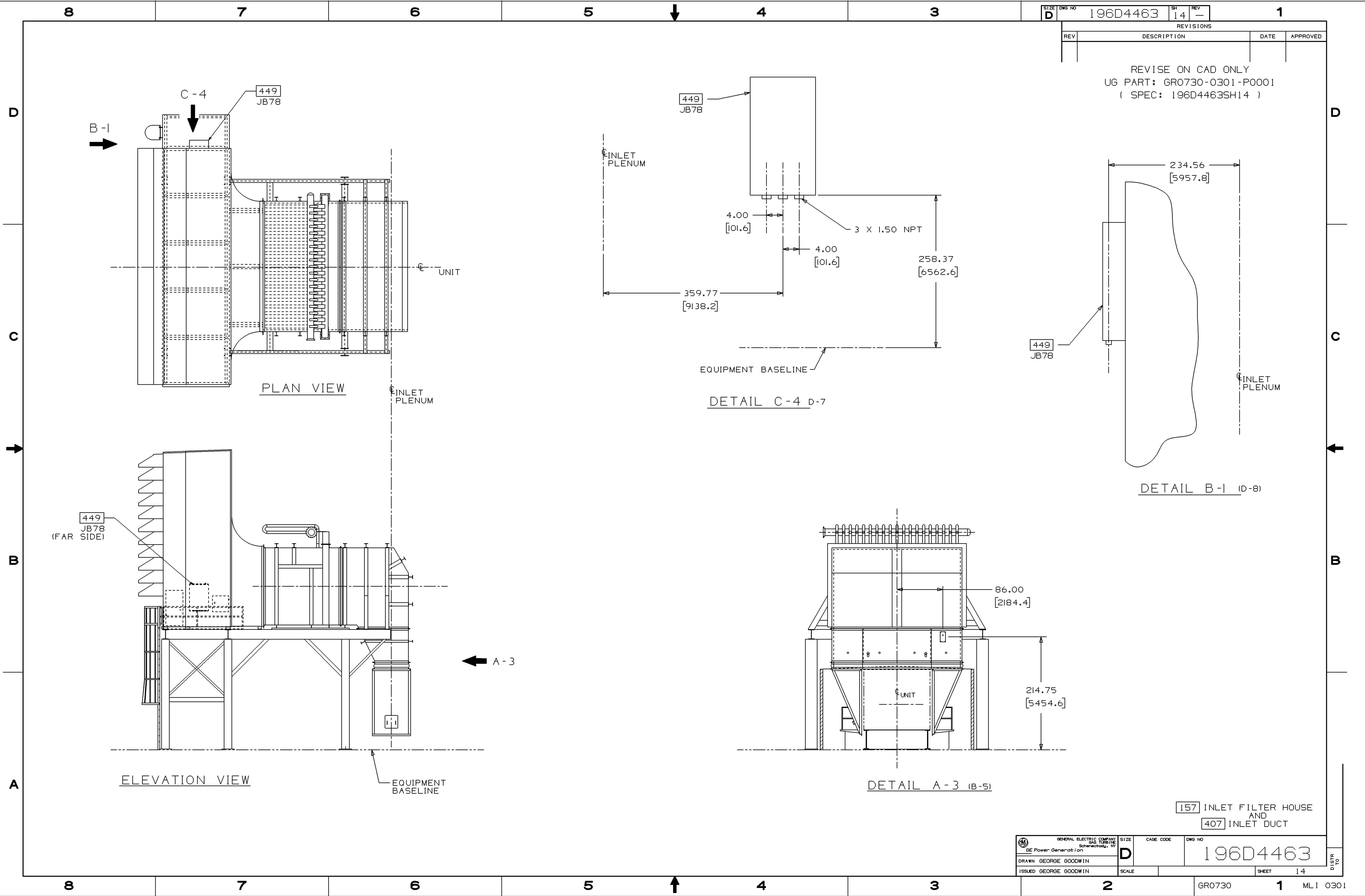
2

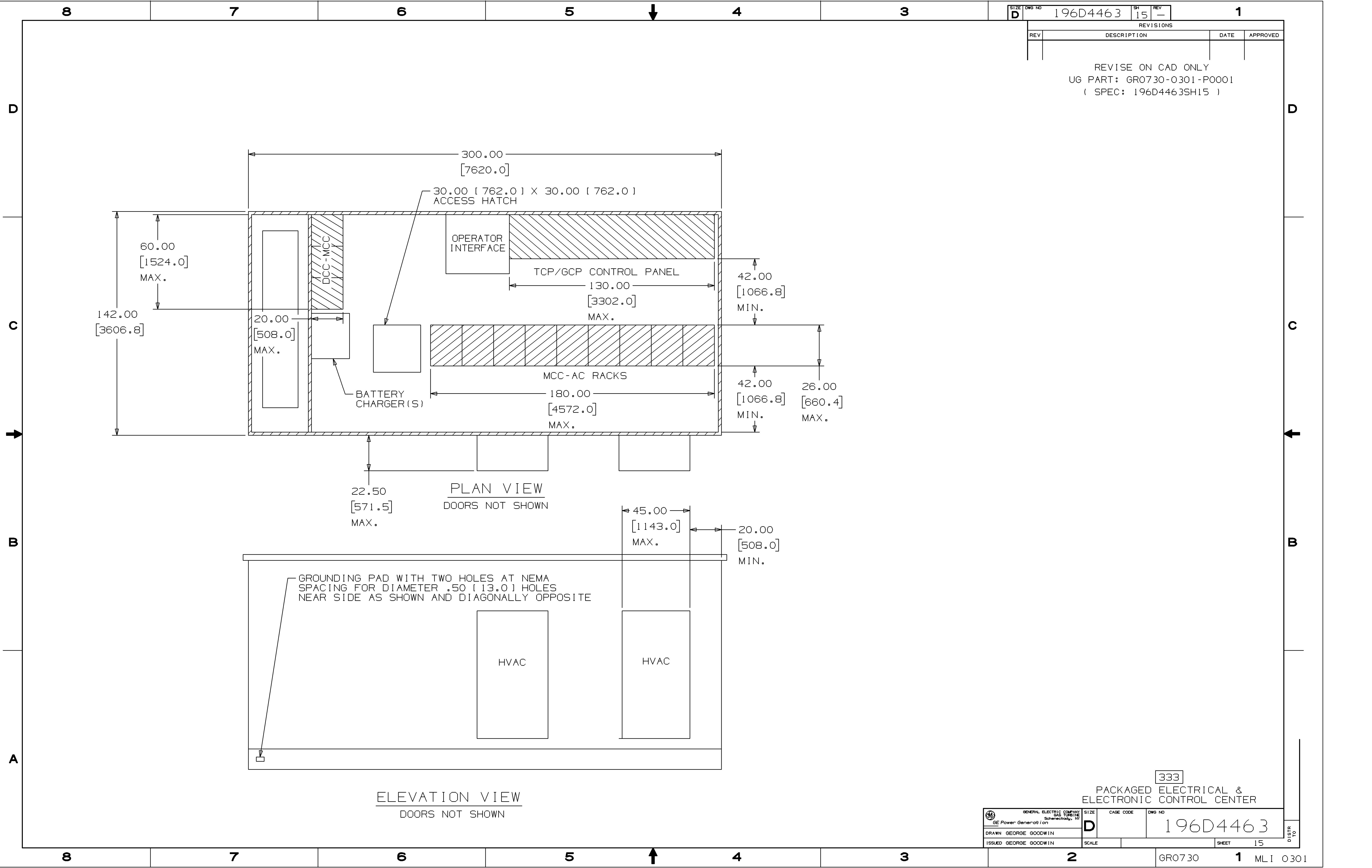
1

DISTR
TO









REV	DESCRIPTION	DATE	APPROVED

REVISE ON CAD ONLY
UG PART: GR0730-0301-P0001
(SPEC: 196D4463SH15)

GE Power Generation	SIZE D	CAGE CODE	DWG NO 196D4463
DRAWN GEORGE GOODWIN	ISSUED GEORGE GOODWIN	SCALE	SHEET 15

333
PACKAGED ELECTRICAL &
ELECTRONIC CONTROL CENTER

GR0730 1 MLI 0301